

# PAINTING SIMULATOR

VR Based Simulator

## VOCATIONAL TRAINING SIMULATOR

SANLAB combines deep expertise in robotics and simulation with a customer-focused approach to deliver industry-leading vocational training simulators.

Painting Simulator provides realistic training environment powered by VR technologies, offering comprehensive performance analysis. With specially designed spray and sandblasting gun units, the system delivers a highly immersive experience that closely replicates real-world operations.

### APPLICATIONS

- Industrial Painting Training
- Painter Skill Development
- Real-time performance evaluation

#### VR BASED

- Immersive experience
- Easy setup
- Future-ready



#### DIMENSIONS

Overall Dimensions (L-W-H)	0.37 m - 0.47 m - 0.57 m
Net Weight (product only)	95 kg
Shipping Dimensions (L-W-H)	1.00 m - 0.75 m - 1.00 m
Crate Weight (total)	145 kg
Packaging Type	Wooden crate

### ADVANTAGES

- Cuts costs
- Eliminates accident risks
- Increases safety
- Lowers operating & maintenance costs
- Protects equipment
- Enables all-weather training
- No worksite required
- Eco-friendly use
- Realistic experience
- Multi-language support

### AUTOMOTIVE INDUSTRY

- Vehicle Door
- Vehicle Roof
- Welded Component
- Front Bumper
- Flat Surface
- Angled Panel
- Vehicle Side Panel
- Vehicle Hood

Models and training scenarios can be tailored for industries such as shipbuilding, aerospace.

# PAINTING SIMULATOR

VR Based Simulator

## VOCATIONAL TRAINING SIMULATOR

### SPECIFICATIONS

Display System	32" TV
Touch Screen	13.3" touch screen
Audio System	Surround stereo
Power Supply	220VAC
Minimum System Requirements	Intel(R) Core(TM) i7 - 32 GB Ram 120GB SSD - 512GB Harddisk - NVidia GeForce RTX 4060 Windows 11 - Wireless Combo Keyboard Mouse

### HARDWARE

- Adjustable spray gun head
- VR headset
- Instructor control console with touch display
- Multi-display systems

### SOFTWARE

- Modern 3D graphics
- Versatile use with painting and sandblasting modules
- Precise tracking of parameters such as spray angle, distance, and speed
- Coating thickness analysis and defect mapping capabilities
- Interactive selection screens for painting technique, material, color, and equipment

### ■ ADVANCED MOTION TRACKING & 3D REVIEW

User movements are accurately tracked and evaluated based on angle, distance, and speed. The work performed during the simulation can be reviewed in 3D. Critical elements such as spray angle and distance are analyzed using color-coded visualizations. Additionally, multi-layer coating can be applied, and coating thickness can be monitored.

### OPTIONS

- Additional industries
- Additional models

### SERVICE & SUPPORT

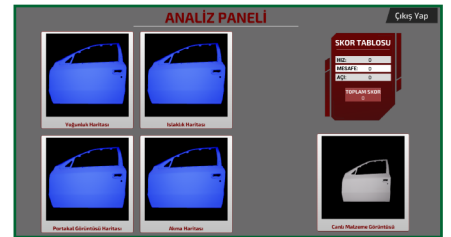
Committed to customer satisfaction, we deliver tailored support solutions designed to meet your specific operational requirements.



Scenario Screen



Painting Simulator



Reports