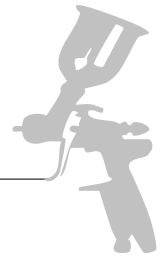


PAINTING SIMULATOR



VR-AR-XR Based Painting Simulator

Paint simulators provide painting training in a realistic simulation environment using VR and AR technologies, offering detailed performance analysis. The system delivers a highly immersive experience through specially designed spray and sandblasting gun hand units, closely replicating real-world operations.

APPLICATIONS

- Industrial Painting Training
- Painter Skill Development
- Real-time performance evaluation



AR/VR/XR
Painting Simulator



ADVANTAGES

- Significant reduction in costs
- Eliminates accident risks to staff
- Improves occupational safety
- Reduces operating and maintenance costs
- Prevents equipment damage
- Allows training in any weather conditions
- Not limited by worksite availability
- Eco-friendly operation
- Realistic experience
- Multi-language interface

DIMENSIONS

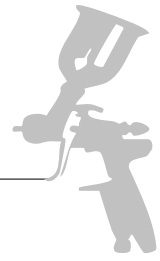
Overall Dimensions (L-W-H)	0.36 m - 0.41 m - 0.50 m
Shipping Dimensions	0.62 m - 0.66 m - 0.60 m
Net Weight	30 kg
Required Installation Space	1.00 m - 0.70 m - 0.50 m
Packaging Type	Wooden crate

AUTOMOTIVE INDUSTRY

- Vehicle Door
- Vehicle Roof
- Welded Component
- Front Bumper
- Flat Surface
- Angled Panel
- Vehicle Side Panel
- Vehicle Hood

- *Models and training scenarios can be tailored for industries such as shipbuilding, aerospace.*

PAINTING SIMULATOR



VR-AR-XR Based Painting Simulator

SPECIFICATIONS

Power Supply	220VAC , 50Hz
Operating Temperature Range	-30°C to +60°C
Control Interface	Touch screen, wireless keyboard
Display System	13.3" touch screen, 43" TV
Audio System	Surround stereo

HARDWARE

- Adjustable spray gun head
- VR headset
- Instructor control console with touch display
- Multi-display systems

SOFTWARE

- Modern 3D graphics
- Versatile use with painting and sandblasting modules
- Precise tracking of parameters such as spray angle, distance, and speed
- Coating thickness analysis and defect mapping capabilities
- Interactive selection screens for painting technique, material, color, and equipment

- *User movements are accurately tracked and evaluated based on angle, distance, and speed.*
- *The work performed during the simulation can be reviewed in 3D. Critical elements such as spray angle and distance are analyzed using color-coded visualizations. Additionally, multi-layer coating can be applied, and coating thickness can be monitored.*

OPTIONS

- Additional industries
- Additional models

SERVICE & SUPPORT

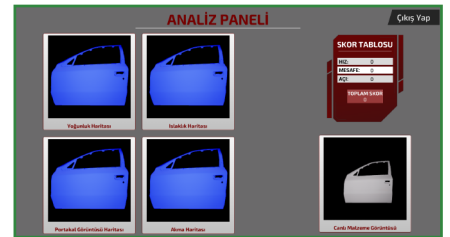
With a strong commitment to customer satisfaction, we provide customized support solutions tailored to specific operational needs.



Scenario Screen



Painting Simulator



Reports